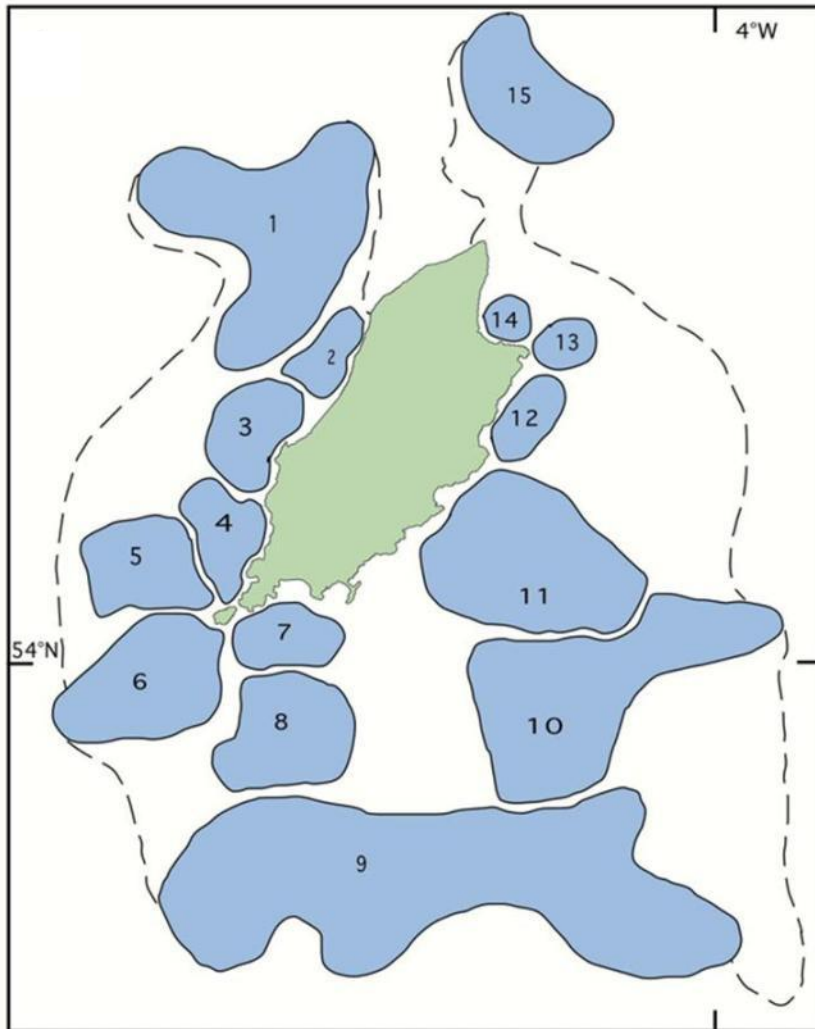




# THE ISLE OF MAN SCALLOP FISHERY: RESEARCH AND MANAGEMENT

LEE MURRAY, MICHEL KAISER AND  
SIMON NEILL

# THE FISHERY



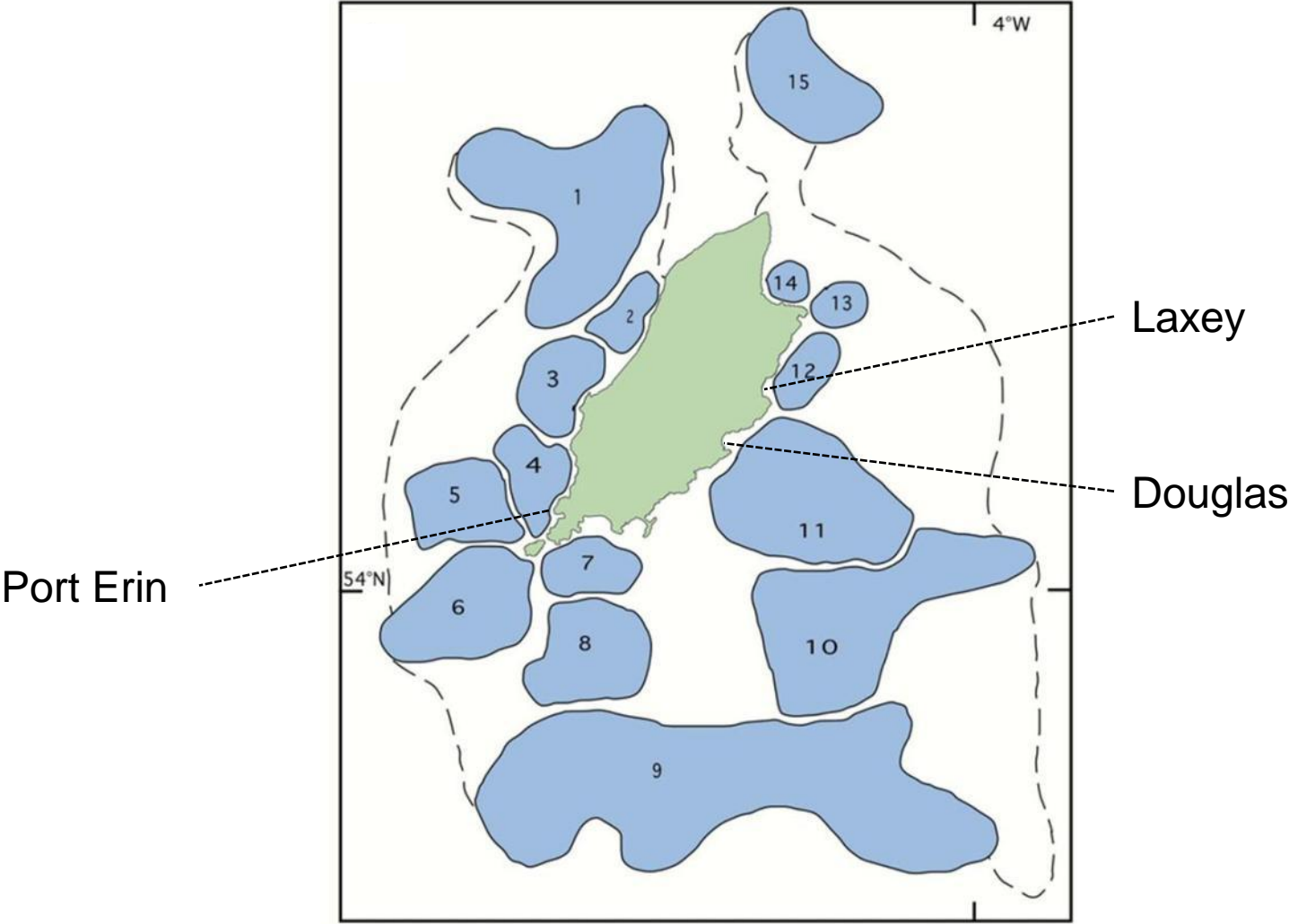
## 2007 statistics

- 31 vessels
- *Pecten maximus* :
  - 1 200 tonnes landed
  - c.37 500 fishing hours
- *Aequipecten opercularis*:
  - 2 035 tonnes landed

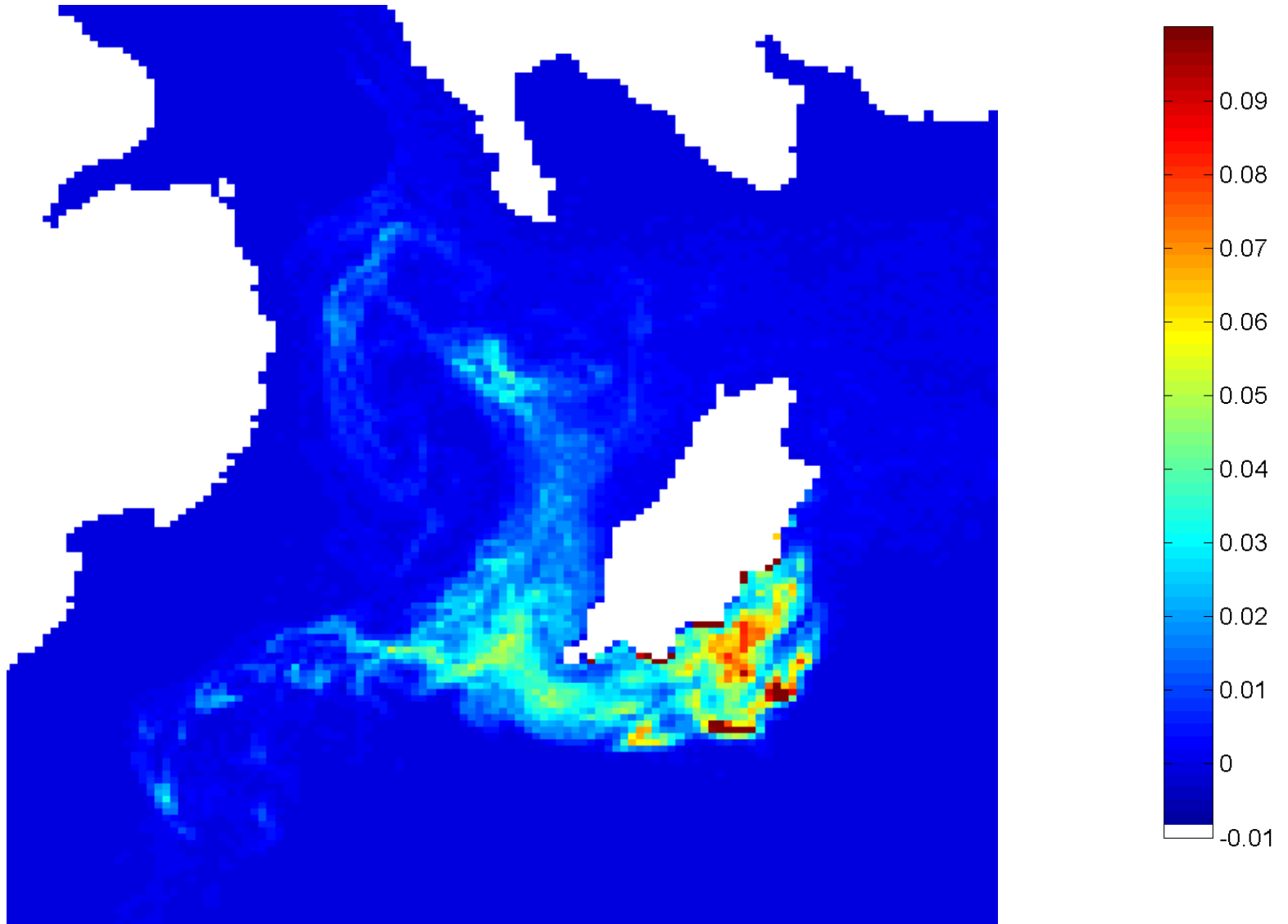
# CURRENT MANAGEMENT

- Closed season: June to October
- Dusk to dawn fishing curfew
- Compulsory scientific logbook submission
- Minimum landing size: 110 mm width
- Fishing Exclusion Zones

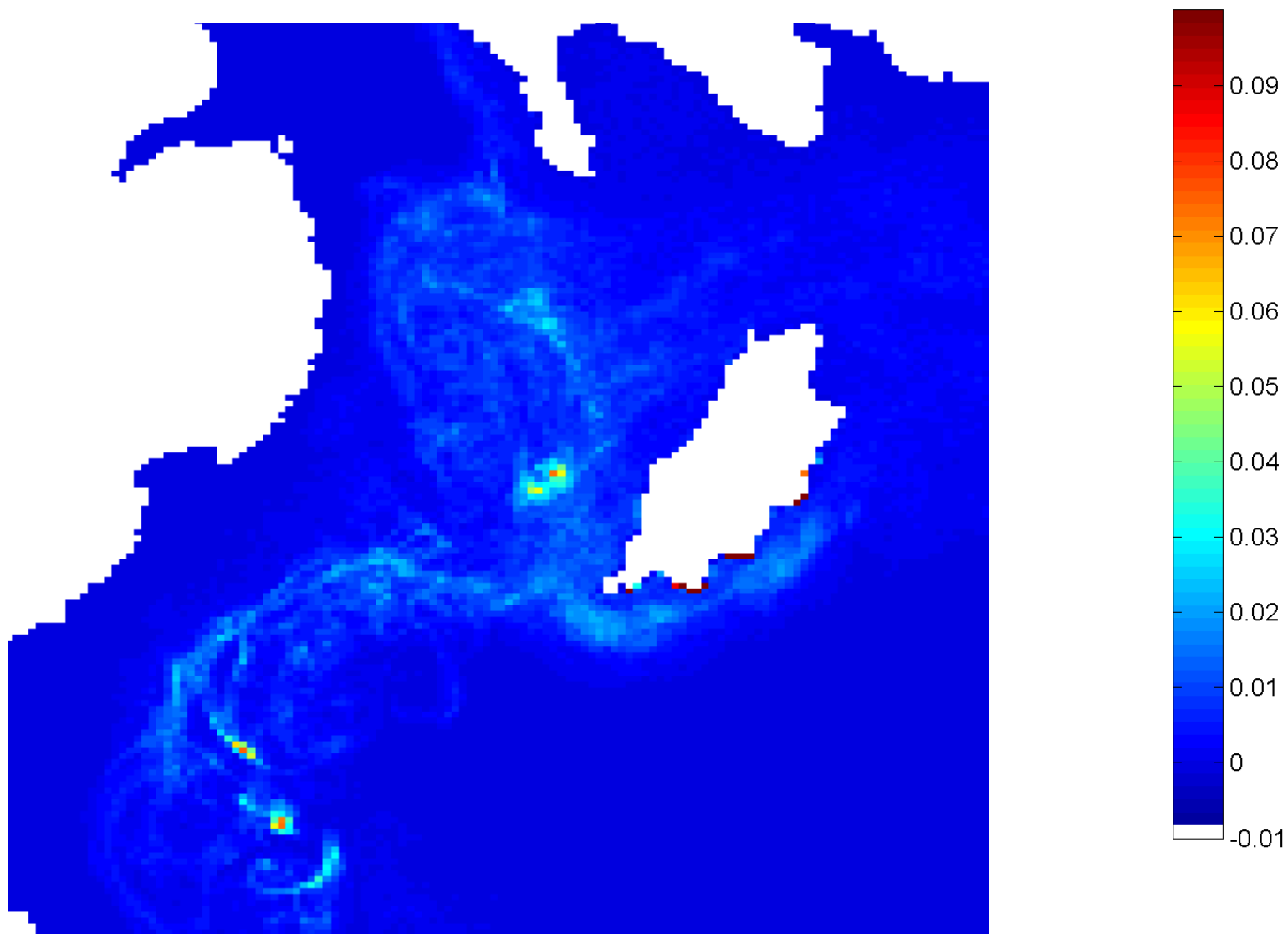
# FISHING EXCLUSION ZONES: LARVAL DISPERSAL



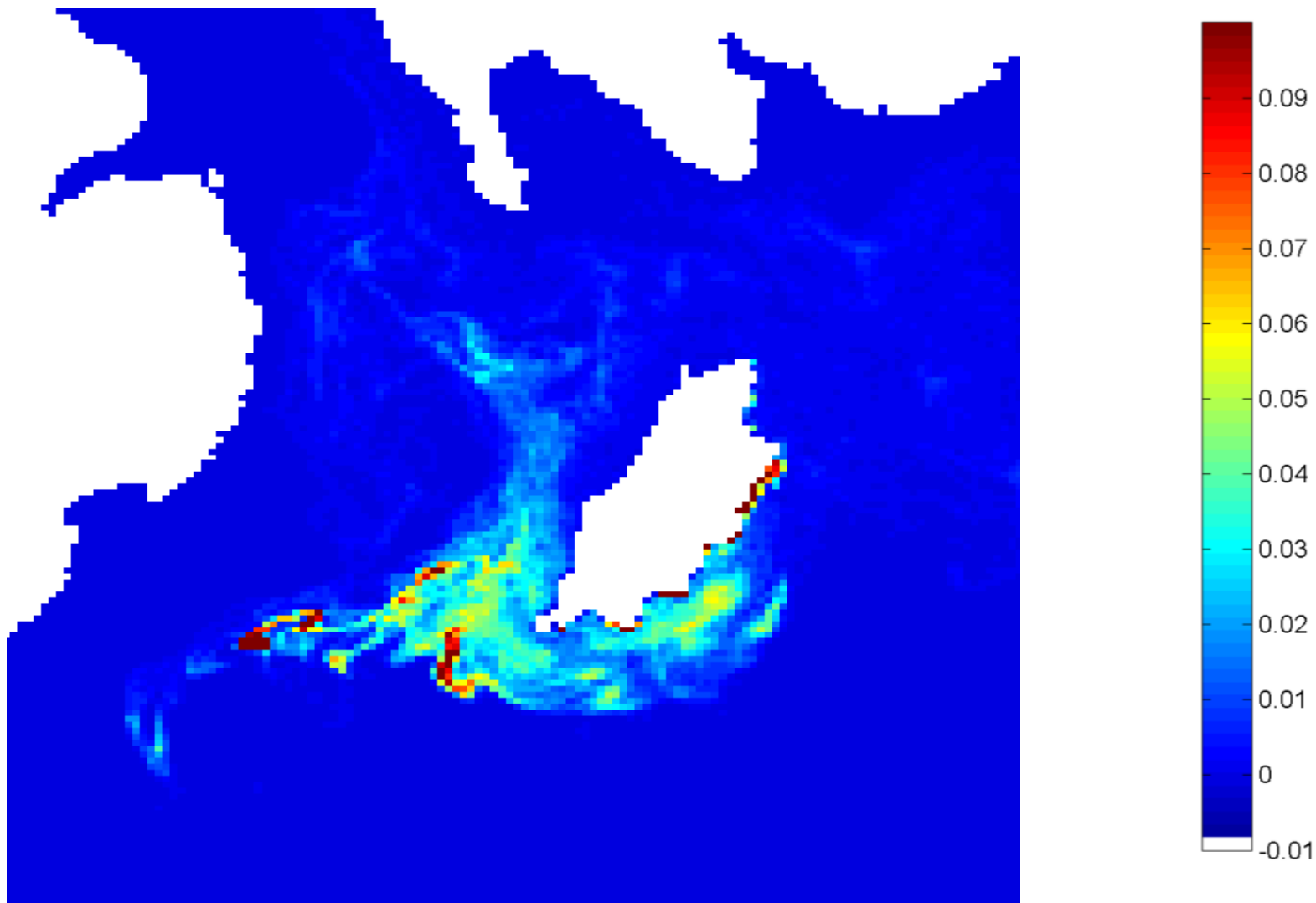
# Douglas Bay – 21 days post release



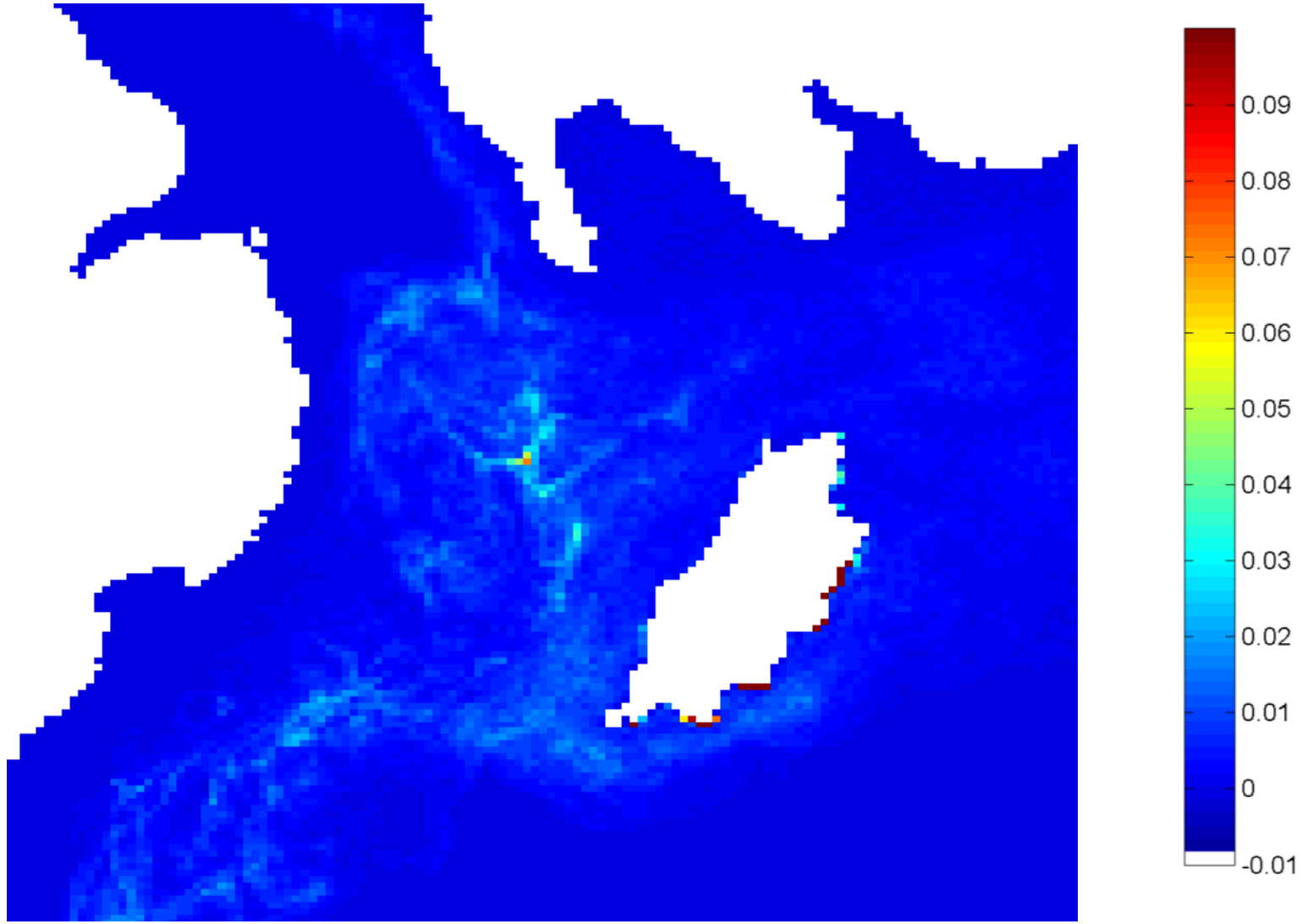
# Douglas Bay – 35 days post release



# Laxey Bay – 21 days post release

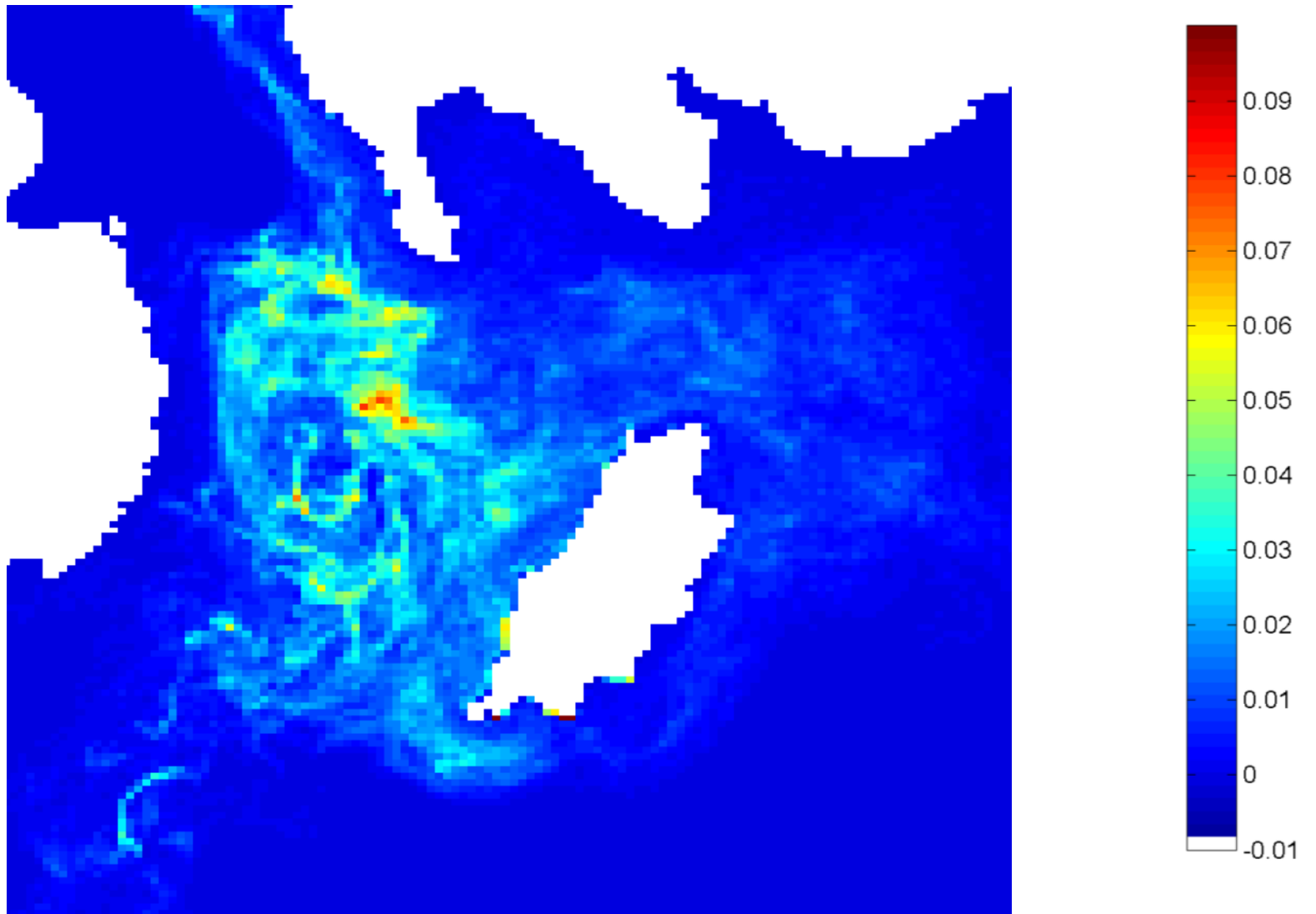


# Laxey Bay – 35 days post release

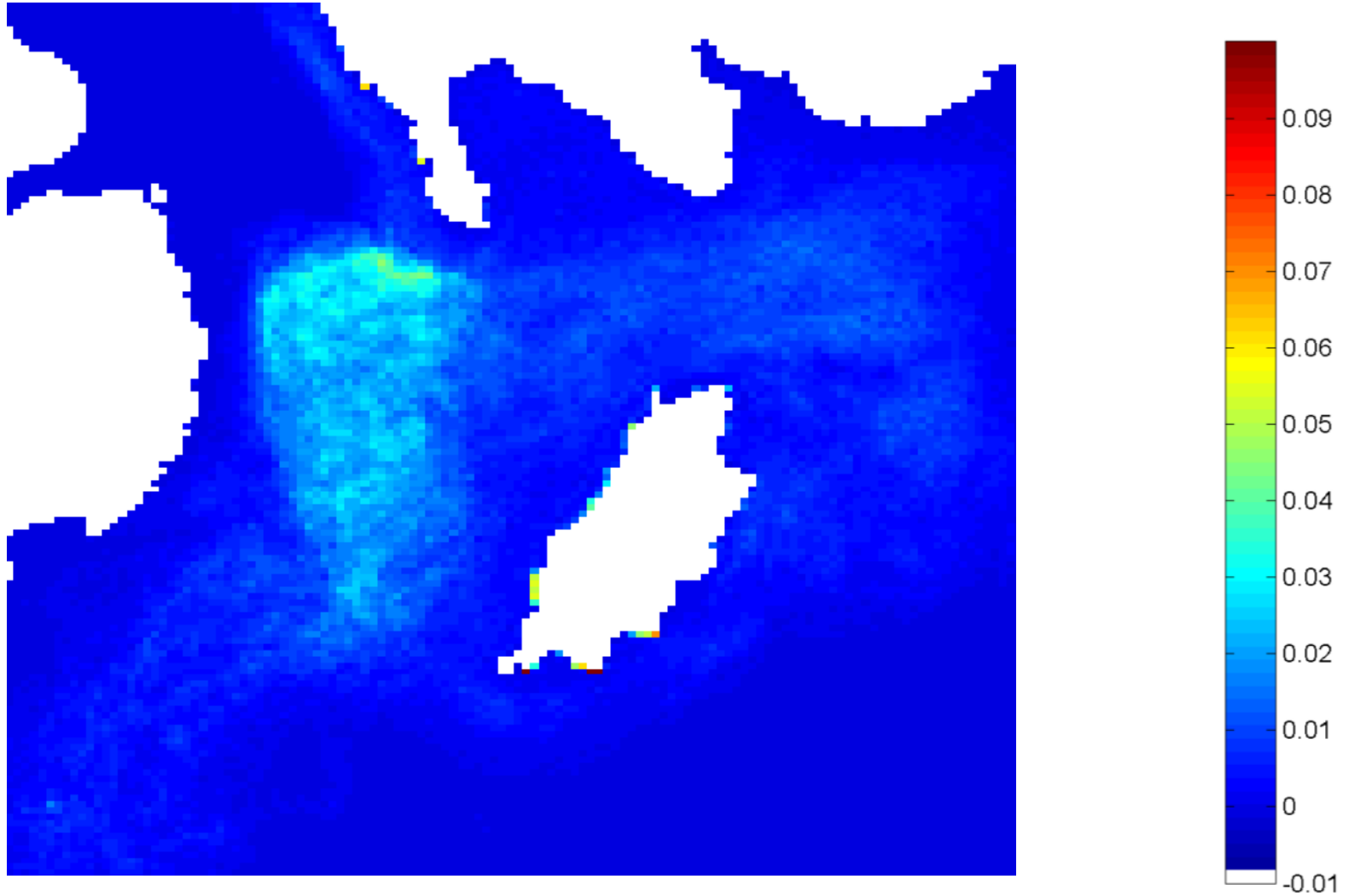




# Port Erin – 21 days post release



Source: Port Erin – 35 days post release



# SEABED SURVEYS



# PORT ERIN

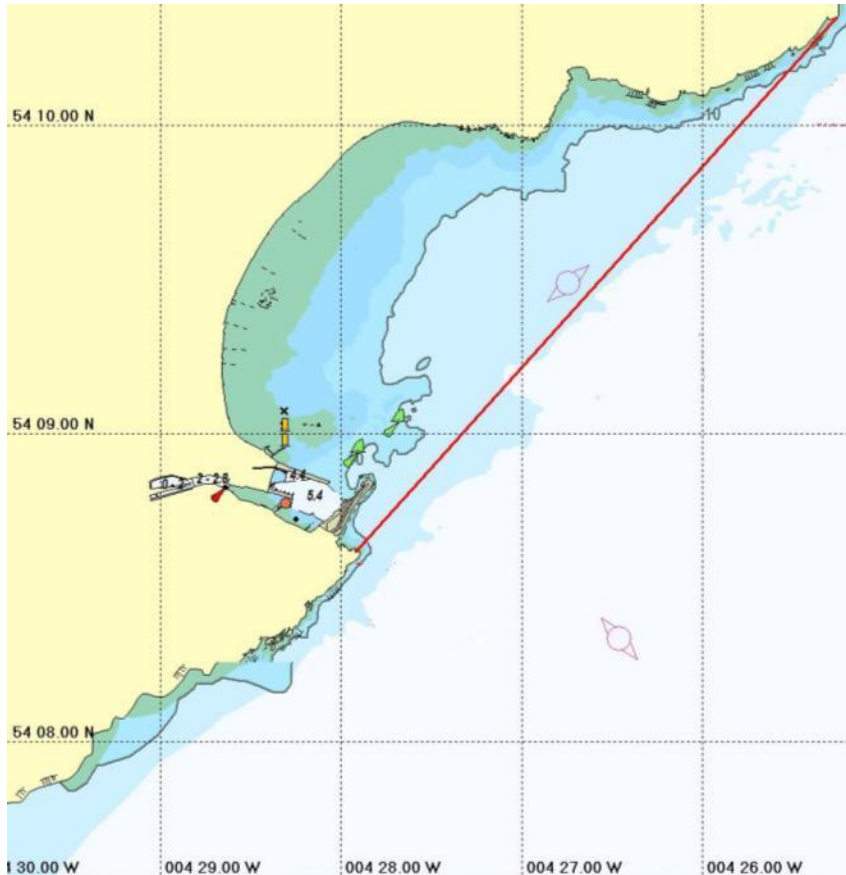




# DOUGLAS BAY



# DOUGLAS BAY



- FEZ designated as Douglas harbour limits
- Measuring success:
  - Bi-annual dredging surveys
  - Visual seabed surveys
    - Inshore and offshore
- Spat settlement

# FUTURE RESEARCH AND MANAGEMENT

- Scallop hatchery
- Further fishing exclusion zones
  - Source and sink
- Fishery-independent data:
  - Bi-annual dredging surveys
  - Visual seabed surveys
- Chlorophyll and turbidity measurements
  - Carrying capacity
- VMS data
- Cable reef
- Industry questionnaire