

**A selection of stills from Len Walters habitat survey footage in  
Cardigan Bay**



Curled octopus, *Eledone cirrhosa*



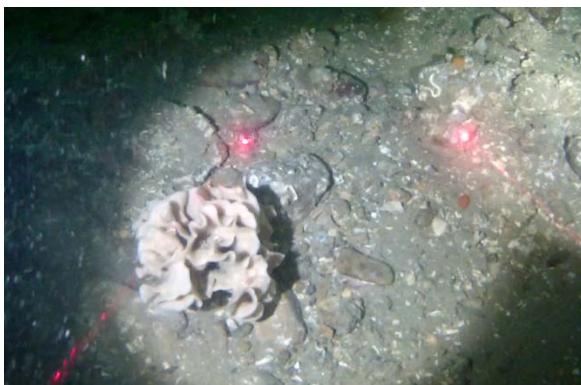
Curled octopus, *Eledone cirrhosa*



Edible crab, *Cancer pagurus*



Spider crab, *Maja squinado*/*Maja brachydactyla*



Ross coral, *Pentapora fascialis*



A tube anemone, *Cerianthus lloydii*



King scallop, *Pecten maximus*



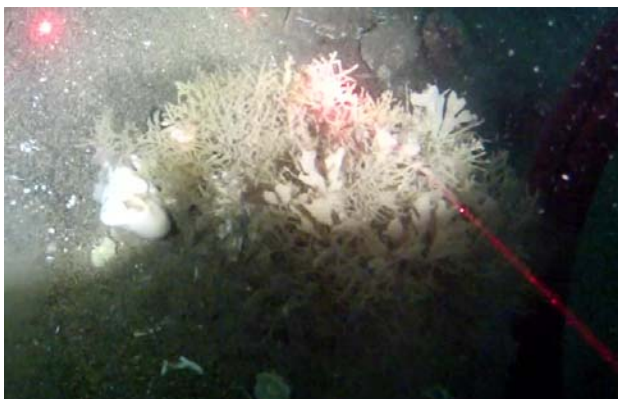
Queen scallop, *Aequipecten opercularis*



Queen scallop, *Aequipecten opercularis*



Queen scallop, *Aequipecten opercularis*



Turf of hydroids and bryozoans (*Flustra foliacea*)



Ross coral, *Pentapora fascialis*



Small gadoids



Common starfish, *Asterias rubens*



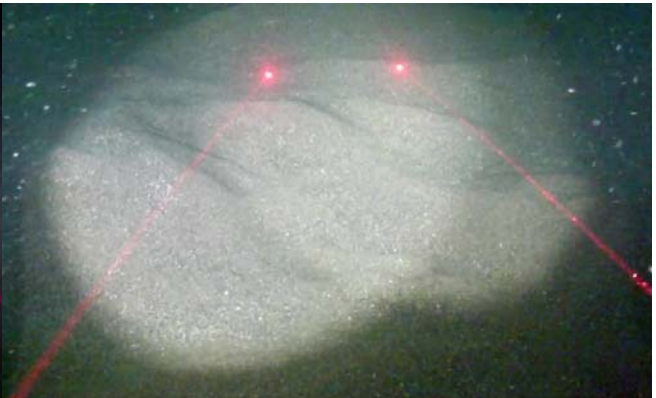
Brittle star bed – *Ophiothrix fragilis*



Brittle star bed- *Ophiothrix fragilis*



Sand ripples



Sand ripples



Squat lobster, *Munida rugosa*



Hermit crab, *Pagurus bernhardus*